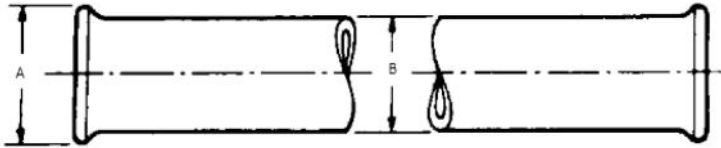


KIMAX® Beaded Process Pipe and Fittings

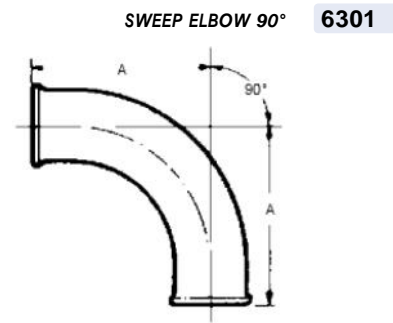


1/2" I.D. Length	A 57/64" Article No.	B 3/4" Article No.	3/4" I.D. Length	A 15/32" Article No.	B 1" Article No.	1" I.D. Length	A 117/32" Article No.	B 15/16" Article No.	1 1/2" I.D. Length	A 21/16" Article No.	B 127/32" Article No.
3"	6300-48003		3"	6300-68003		3"	6300-10003		-		
4"	6300-48004		4"	6300-68004		4"	6300-10004		4"	6300-15004	
6"	6300-48006		6"	6300-68006		6"	6300-10006		6"	6300-15006	
12"	6300-48012		12"	6300-68012		12"	6300-10012		12"	6300-15012	
18"	6300-48018		18"	6300-68018		18"	6300-10018		18"	6300-15018	
24"	6300-48024		24"	6300-68024		24"	6300-10024		24"	6300-15024	
30"	6300-48030		30"	6300-68030		30"	6300-10030		30"	6300-15030	
36"	6300-48036		36"	6300-68036		36"	6300-10036		36"	6300-15036	
48"	6300-48048		48"	6300-68048		48"	6300-10048		48"	6300-15048	
60"	6300-48060		60"	6300-68060		60"	6300-10060		60"	6300-15060	
72"	6300-48072		72"	6300-68072		72"	6300-10072		72"	6300-15072	
84"	6300-48084		84"	6300-68084		84"	6300-10084		84"	6300-15084	
96"	6300-48096		96"	6300-68096		96"	6300-10096		96"	6300-15096	
						108"	6300-10108		108"	6300-15108	
						120"	6300-10120		120"	6300-15120	

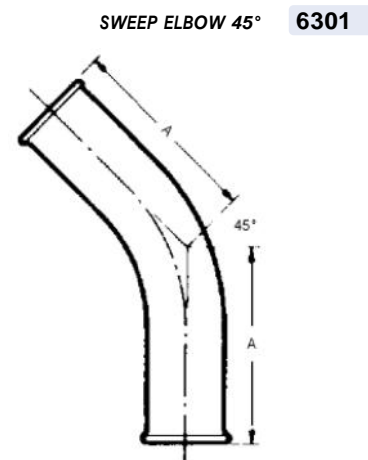
2" I.D. Length	A 29/16" Article No.	B 25/16" Article No.	3" I.D. Length	A 311/16" Article No.	B 37/16" Article No.	4" I.D. Length	A 47/8" Article No.	B 49/16" Article No.
-	-	-	-	-	-	-	-	-
4"	6300-20004		4"	6300-30004				
6"	6300-20006		6"	6300-30006		6"	6300-40006	
12"	6300-20012		12"	6300-30012		12"	6300-40012	
18"	6300-20018		18"	6300-30018		18"	6300-40018	
24"	6300-20024		24"	6300-30024		24"	6300-40024	
30"	6300-20030		30"	6300-30030		30"	6300-40030	
36"	6300-20036		36"	6300-30036		36"	6300-40036	
48"	6300-20048		48"	6300-30048		48"	6300-40048	
60"	6300-20060		60"	6300-30060		60"	6300-40060	
72"	6300-20072		72"	6300-30072		72"	6300-40072	
84"	6300-20084		84"	6300-30084		84"	6300-40084	
96"	6300-20096		96"	6300-30096		96"	6300-40096	
108"	6300-20108		108"	6300-30108		108"	6300-40108	
120"	6300-20120		120"	6300-30120		120"	6300-40120	

Special lengths are available from Schott or can be field fabricated.
Use catalog dimensions for piping layout as gasket thickness allowance is included.

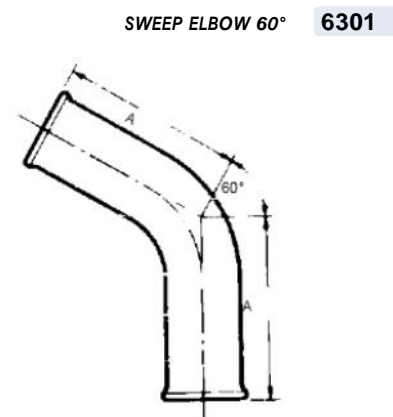
Size	A"	Art. No.
1/2"-90°	2 1/4	6301-4890
3/4"-90°	2 1/2	6890
1" -90°	2 3/4	1090
1 1/2"-90°	5	1590
2" -90°	6	2090
3" -90°	7	3090
4" -90°	10	4090



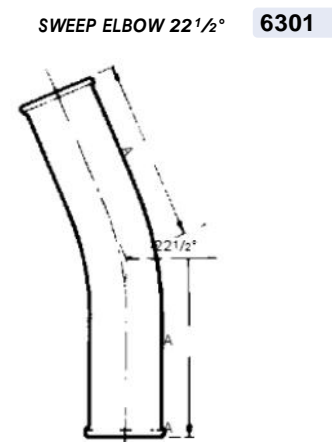
Size	A"	Art. No.
1/2"-45°	2 1/4	6301-4845
3/4"-45°	2 1/2	6845
1" -45°	2 3/4	1045
1 1/2"-45°	3 1/2	1545
2" -45°	4	2045
3" -45°	5	3045
4" -45°	7	4045



Size	A"	Art. No.
1/2"-60°	2 1/4	6301-4860 *
3/4"-60°	2 1/2	6860 *
1" -60°	2 3/4	1060 *
1 1/2"-60°	3 1/2	1560 *
2" -60°	4	2060
3" -60°	5	3060
4" -60°	7	4060

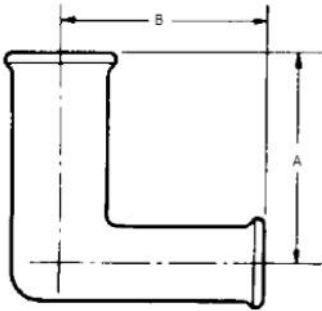


Size	A"	Art. No.
1/2"-22°	2 1/4	6301-4822 *
3/4"-22°	2 1/2	6822 *
1" -22°	2 3/4	1022 *
1 1/2"-22°	3 1/2	1522 *
2" -22°	4	2022
3" -22°	5	3022
4" -22°	7	4022



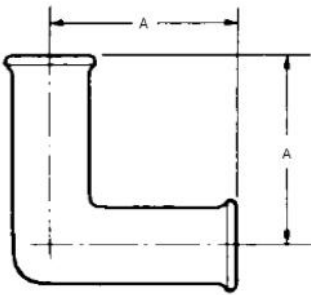
Use catalog dimensions for piping layout as gasket allowance is included.
 *Manufactured per order. Not returnable.

6302 REDUCER ELBOW



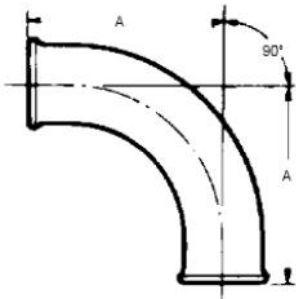
Size	A"	B"	Art. No.
3/4" x 1/2"	2 1/2	2 1/2	6302-6848 *
1" x 1/2"	2 3/4	2 3/4	1048 *
1" x 3/4"	2 3/4	2 3/4	1068 *
1 1/2" x 1/2"	3 1/2	3	1548 *
1 1/2" x 3/4"	3 1/2	3	1568 *
1 1/2" x 1"	3 1/2	3	1510 *
2" x 1/2"	4	3	2048 *
2" x 3/4"	4	3	2068 *
2" x 1"	4	3	2010 *
2" x 1 1/2"	5	3 1/2	2015 *
3" x 1"	5	3 1/2	3010 *
3" x 1 1/2"	5	4	3015 *
3" x 2"	5	4 1/2	3020 *
4" x 1"	7	4	4010 *
4" x 1 1/2"	7	4 1/2	4015 *
4" x 2"	7	5	4020 *
4" x 3"	7	5 1/2	4030 *

6303 MITERED ELBOW 90°



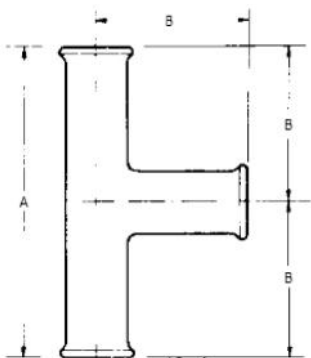
Size	A"	Art. No.
1 1/2" -90°	3 1/2	6303-1590
2" -90°	4	2090
3" -90°	5	3090
4" -90°	7	4090

6304 SHORT RADIUS ELBOW 90°



Size	A"	Art. No.
1 1/2" -90°	3 1/2	6304-1590
2" -90°	4	2090
3" -90°	5	3090
4" -90°	7	4090

6310 STRAIGHT T



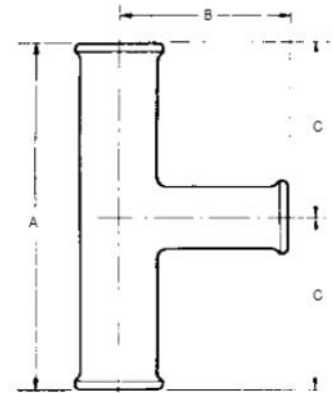
Size	A"	B"	Art. No.
1/2"	4 1/2	2 1/4	6310-4848
3/4"	5	2 1/2	6868
1"	5 1/2	2 3/4	1010
1 1/2"	7	3 1/2	1515
2"	8	4	2020
3"	10	5	3030
4"	14	7	4040

Use catalog dimensions for piping layout as gasket allowance is included.
 *Manufactured per order. Not returnable.

Size Run x Branch	A"	B"	C"	Art. No.
3/4" x 1/2"	5	2 1/2	2 1/2	6311-6848
1" x 1/2"	5 1/2	2 3/4	2 3/4	1048
1" x 3/4"	5 1/2	2 3/4	2 3/4	1068
1 1/2" x 1/2"	7	3	3 1/2	1548
1 1/2" x 3/4"	7	3	3 1/2	1568
1 1/2" x 1"	7	3	3 1/2	1510
2" x 1/2"	8	3	4	2048
2" x 3/4"	8	3	4	2068
2" x 1"	8	3	4	2010
2" x 1 1/2"	8	3 1/2	4	2015
3" x 1"	10	3 1/2	5	3010
3" x 1 1/2"	10	4	5	3015
3" x 2"	10	4 1/2	5	3020
4" x 1"	14	4	7	4010
4" x 1 1/2"	14	4 1/2	7	4015
4" x 2"	14	5	7	4020
4" x 3"	14	5 1/2	7	4030

REDUCING T (BRANCH)

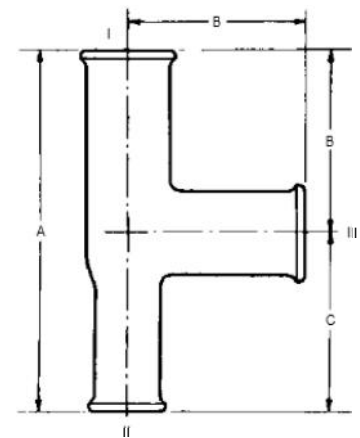
6311



Size I II III	A"	B"	C"	Art. No.
3/4" x 1/2" x 3/4"	5	2 1/2	2 1/2	6312-6848*
1" x 1/2" x 1"	5 1/2	2 3/4	2 3/4	1048*
1" x 3/4" x 1"	5 1/2	2 3/4	2 3/4	1068*
1 1/2" x 1/2" x 1 1/2"	6 1/2	3 1/2	3	1548*
1 1/2" x 3/4" x 1 1/2"	6 1/2	3 1/2	3	1568*
1 1/2" x 1" x 1 1/2"	6 1/2	3 1/2	3	1510*
2" x 1/2" x 2"	7	4	3	2048*
2" x 3/4" x 2"	7	4	3	2068*
2" x 1" x 2"	7	4	3	2010*
2" x 1 1/2" x 2"	7 1/2	4	3 1/2	2015*
3" x 1" x 3"	8 1/2	5	3 1/2	3010*
3" x 1 1/2" x 3"	9	5	4	3015*
3" x 2" x 3"	9 1/2	5	4 1/2	3020*
4" x 1" x 4"	11	7	4	4010*
4" x 1 1/2" x 4"	11 1/2	7	4 1/2	4015*
4" x 2" x 4"	12	7	5	4020*
4" x 3" x 4"	12 1/2	7	5 1/2	4030*

REDUCING T (RUN)

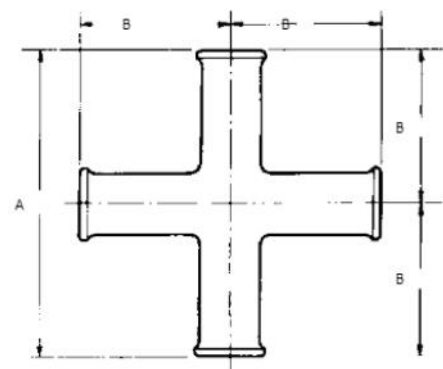
6312



Size	A"	B"	Art. No.
1/2" x 1/2"	4 1/2	2 1/4	6320-4848*
3/4" x 3/4"	5	2 1/2	6868*
1" x 1"	5 1/2	2 3/4	1010*
1 1/2" x 1 1/2"	7	3 1/2	1515*
2" x 2"	8	4	2020*
3" x 3"	10	5	3030*
4" x 4"	14	7	4040*

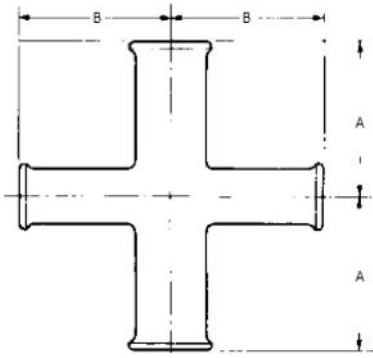
STRAIGHT CROSS

6320



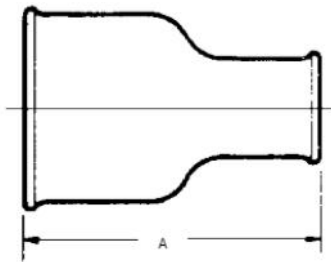
Use catalog dimensions for piping layout as gasket allowance is included.
 *Manufactured per order. Not returnable.

6350 REDUCER CROSS



Size Run x Branch	A"	B"	Art. No.
3/4" x 1/2"	2 1/2	2 1/2	6350-6848 *
1" x 1/2"	2 3/4	2 3/4	1048 *
1" x 3/4"	2 3/4	2 3/4	1068 *
1 1/2" x 1/2"	3 1/2	3	1548 *
1 1/2" x 3/4"	3 1/2	3	1568 *
1 1/2" x 1"	3 1/2	3	1510 *
2" x 1/2"	4	3	2048 *
2" x 3/4"	4	3	2068 *
2" x 1"	4	3	2010 *
2" x 1 1/2"	4	3 1/2	2015 *
3" x 1"	5	3 1/2	3010 *
3" x 1 1/2"	5	4	3015 *
3" x 2"	5	4 1/2	3020 *
4" x 1"	7	4	4010 *
4" x 1 1/2"	7	4 1/2	4015 *
4" x 2"	7	5	4020 *
4" x 3"	7	5 1/2	4030 *

6315 REDUCER STRAIGHT



Size	A	Art. No.
3/4" x 1/2"	4	6315-6848
1" x 1/2"	4	1048
1" x 3/4"	4	1068
1 1/2" x 1/2"	4	1548
1 1/2" x 3/4"	4	1568
1 1/2" x 1"	4	1510
2" x 1/2"	4	2048
2" x 3/4"	4	2068
2" x 1"	4	2010
2" x 1 1/2"	4	2015
3" x 1"	5	3010
3" x 1 1/2"	5	3015
3" x 2"	5	3020
4" x 1"	7	4010
4" x 1 1/2"	7	4015
4" x 2"	7	4020
4" x 3"	7	4030

6340 REDUCER (ECCENTRIC)

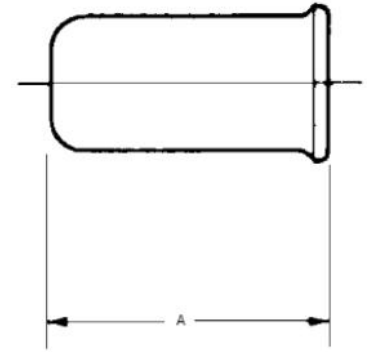


Size	A	Art. No.
3/4" x 1/2"	4	6340-6848 *
1" x 1/2"	4	1048 *
1" x 3/4"	4	1068 *
1 1/2" x 1/2"	4	1548 *
1 1/2" x 3/4"	4	1568 *
1 1/2" x 1"	4	1510 *
2" x 1/2"	4	2048 *
2" x 3/4"	4	2068 *
2" x 1"	4	2010 *
2" x 1 1/2"	4	2015 *
3" x 1"	5	3010 *
3" x 1 1/2"	5	3015 *
3" x 2"	5	3020 *
4" x 1"	7	4010 *
4" x 1 1/2"	7	4015 *
4" x 2"	7	4020 *
4" x 3"	7	4030 *

Use catalog dimensions for piping layout as gasket allowance is included.
 *Manufactured per order. Not returnable.

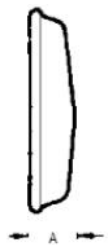
Size	A"	Art. No.
1/2"	2	6336-4800
3/4"	2	6800
1"	2	1000
1 1/2"	3	1500
2"	4	2000
3"	4 3/4	3000
4"	6	4000

END CAP 6336



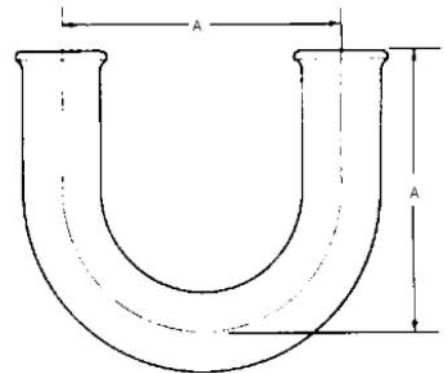
Size	A"	Art. No.
1 1/2"	1	6344-1500
2"	1	2000
3"	1 1/8	3000
4"	1 1/4	4000

END PLUG 6344



Size	A"	Art. No.
1/2"	2 1/4	6365-4800 *
3/4"	2 1/2	6800 *
1"	5 1/2	1000 *
1 1/2"	7	1500 *
2"	7	2000 *
3"	9	3000 *
4"	12	4000 *

U BEND 6365

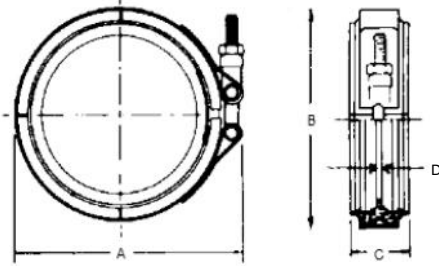


Use catalog dimensions for piping layout as gasket allowance is included.
 *Manufactured per order. Not returnable.

Couplings

Process Pipe Couplings (Bead-to-Bead)

7123 HIGH TEMPERATURE¹⁾



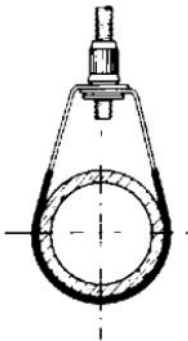
Size	A"	B"	C"	D"	Art. No.
1/2"	1 5/8	1 3/8	7/8	1/8	7123-4800
3/4"	1 3/4	1 1/2	7/8	1/8	6800
1"	2 5/8	1 7/8	1 1/16	1/8	1000
1 1/2"	3	2 7/16	1 5/16	1/8	1500
2"	3 1/2	3 1/8	1 5/16	1/8	2000
3"	4 3/4	4 1/4	1 7/16	1/8	3000
4"	6	5 1/2	1 1/2	1/8	4000

Coupling assembly consists of a 300 series stainless steel outer band with T-bolt and hex nut, and a Fluoroelastomer (FE) liner with a TFE seal ring.

¹⁾ See temperature ratings page 31.

Accessories and Hardware

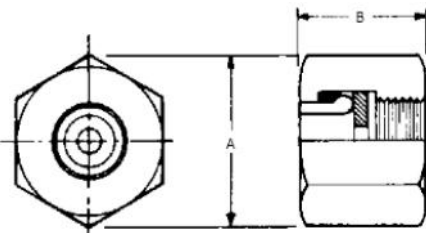
7290 PADDED PIPE HANGER



Size	Thread Diameter	Art. No.
1/2"	3/8 - 16	7290-4800
3/4"	3/8 - 16	6800
1"	3/8 - 16	1000
1 1/2"	3/8 - 16	1500
2"	3/8 - 16	2000
3"	3/8 - 16	3000
4"	3/8 - 16	4000

All hangers are zinc coated and then vinyl coated to prevent glass to metal contact. Use one hanger every 8 to 10 feet. Support all valves and meters independently. Refer to the Installation Section of this catalog.

7340 FAUCET UNION – ALUMINIUM (BEADED TO 1/2" METAL IPS STRAIGHT PIPE THREAD)



Size	A"	B"	Art. No.
1/2" Assembly	1 3/4	1 1/4	7340-4800
1/2" Gasket (TFE)	–	–	4800
1/2" Cushion (TFE)	–	–	4800

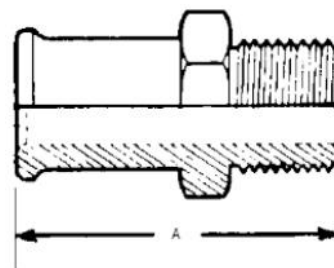
Replacement parts for No. 7340 Assembly include No. 7343 gasket and No. 7344 cushion ring.

Use catalog dimensions for piping layout as gasket allowance is included.

Size	A"	Art. No.
1/2"	2 ⁹ / ₁₆	7350-4800
3/4"	2 ⁹ / ₁₆	6800
1"	2 ⁹ / ₁₆	1000
1 1/2"	2 ⁹ / ₁₆	1500
2"	2 ⁹ / ₁₆	2000
3"	2 ⁹ / ₁₆	3000
4"	2 ⁹ / ₁₆	4000

Used to join threaded female fittings, valves and flanges to beaded pipe.

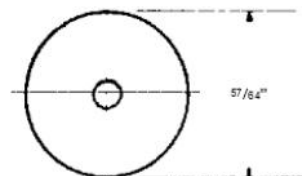
MALE THREADED ADAPTER (316 STAINLESS STEEL) 7350



Size	Art.No.	Description
1/2"	7348-4800	T.F.E.

Place 7348 Flow Gasket into 7126 coupling – place at first horizontal joint from faucet. Used to reduce surge and water hammer in high-purity water systems.

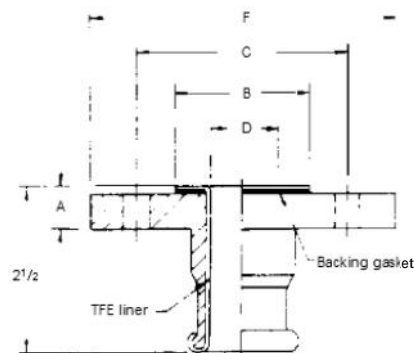
GASKET – FLOW CONTROL (TFE) 7348



Hole: 1/8" DIA.
Thickness: .010"

Nominal Size D	A"	B"	F"	C"	No. of Bolt Holes	Dia Holes	Art. No.
1"	1/2	2	4 1/4	3 1/8	4	5/8	7363-1000
1 1/2"	5/8	2 7/8	5	3 7/8	4	5/8	1500
2"	1 1/16	3 5/8	6	4 3/4	4	3/4	2000
3"	1 3/16	5	7 1/2	6	4	3/4	3000
4"	7/8	6 1/8	9	7 1/2	8	3/4	4000

ANSI TO GLASS ADAPTER 7363



Size	Thickness"	Art. No.
1"	1/4	7240-1000
1 1/2"	1/4	1500
2"	1/4	2000
3"	5/16	3000
4"	5/16	4000

DONUT SPACER 7240



Donut spacer consists of steel ring cushioned with soft asbestos-free gasketing material and covered with a machined TFE envelope.

Use catalog dimensions for piping layout as gasket allowance is included.